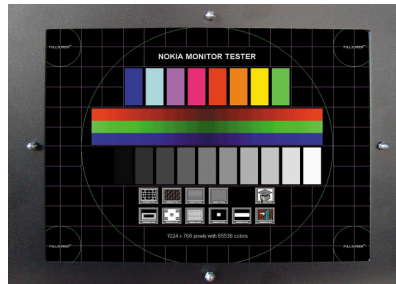


Compatible industrial TFT Displays as replacement for CRT monitors

12,1" TFT replacement monitor

for numeric control

Robofil 310/510 by CHARMILLES



Description

TSUBIS GmbH offers a full line of compatible industrial replacement TFT displays. This monitor was built especially as a replacement for a 14" colour CRT monitor, already preset to numeric controls Robofil 310 / 510 by CHARMILLES.

All our TFT monitors, built in a sturdy metal chassis are mechanical and electrical compatible. Designed for a quick and easy assembling – just plug & play!

Technical data

Display size / Resolution	12,1" TFT Full Colour active / 800x600 Pixel
Brightness	300 cd/m ²
Frequency	15-45 kHz horizontal, 50-75 Hz vertical
Settings	OSD (On Screen Display)
Active area TFT panel	249 mm x 188 mm
Dimensions	315 mm x 236 mm x 70 mm
Front plate	RAL 9005 black, with coated safety screen, up to IP65
Control / Graphic type	Robofil 310/510 by CHARMILLES
Connector	9pol. EGA (TTL)
Power supply	AC 85-240V connector
Temperature range	-10°C to 55°C
Manufactured after	CE label, components are UL and CSA certified

Order information

Item-No.	Article description
LCD12-0032	12,1" TFT- Installation-Monitor with Double-Front-Plate-System

Subject to misprints and technical amendments 10.2010